



## Walk Around Boat T Top Installation Guide

---

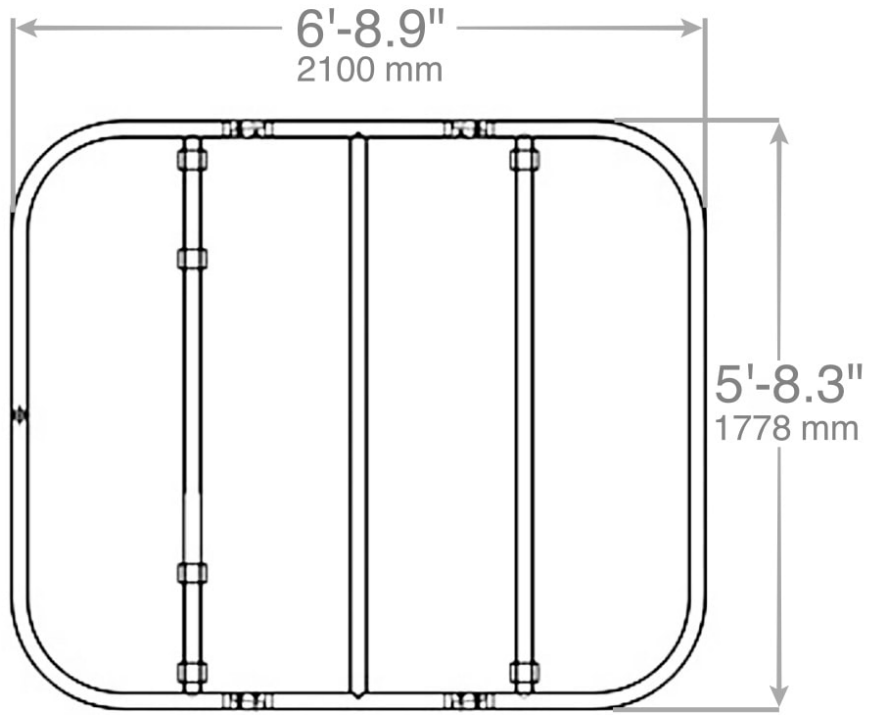
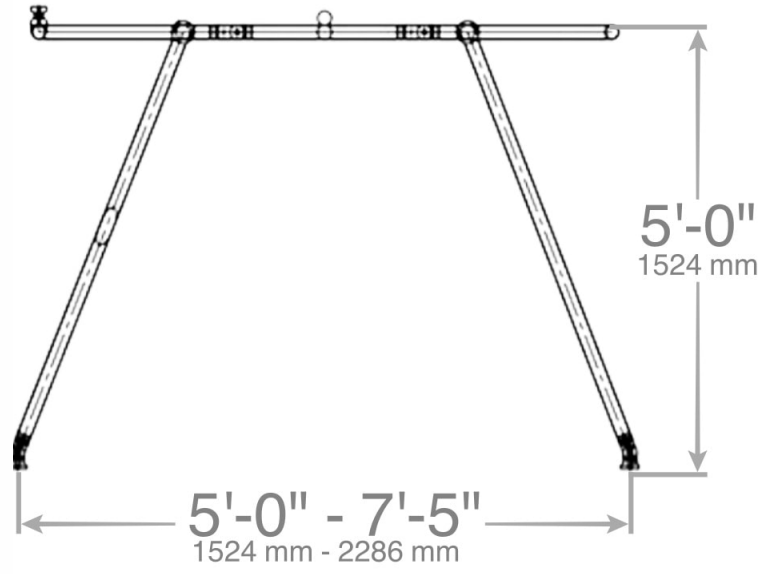
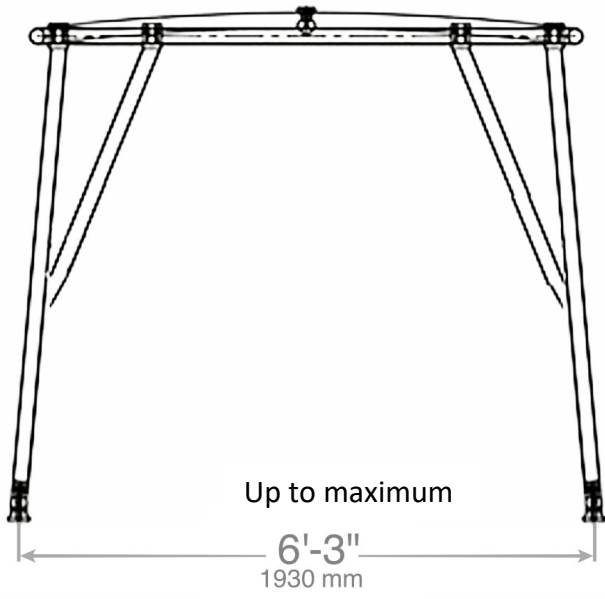


### Dimensions:

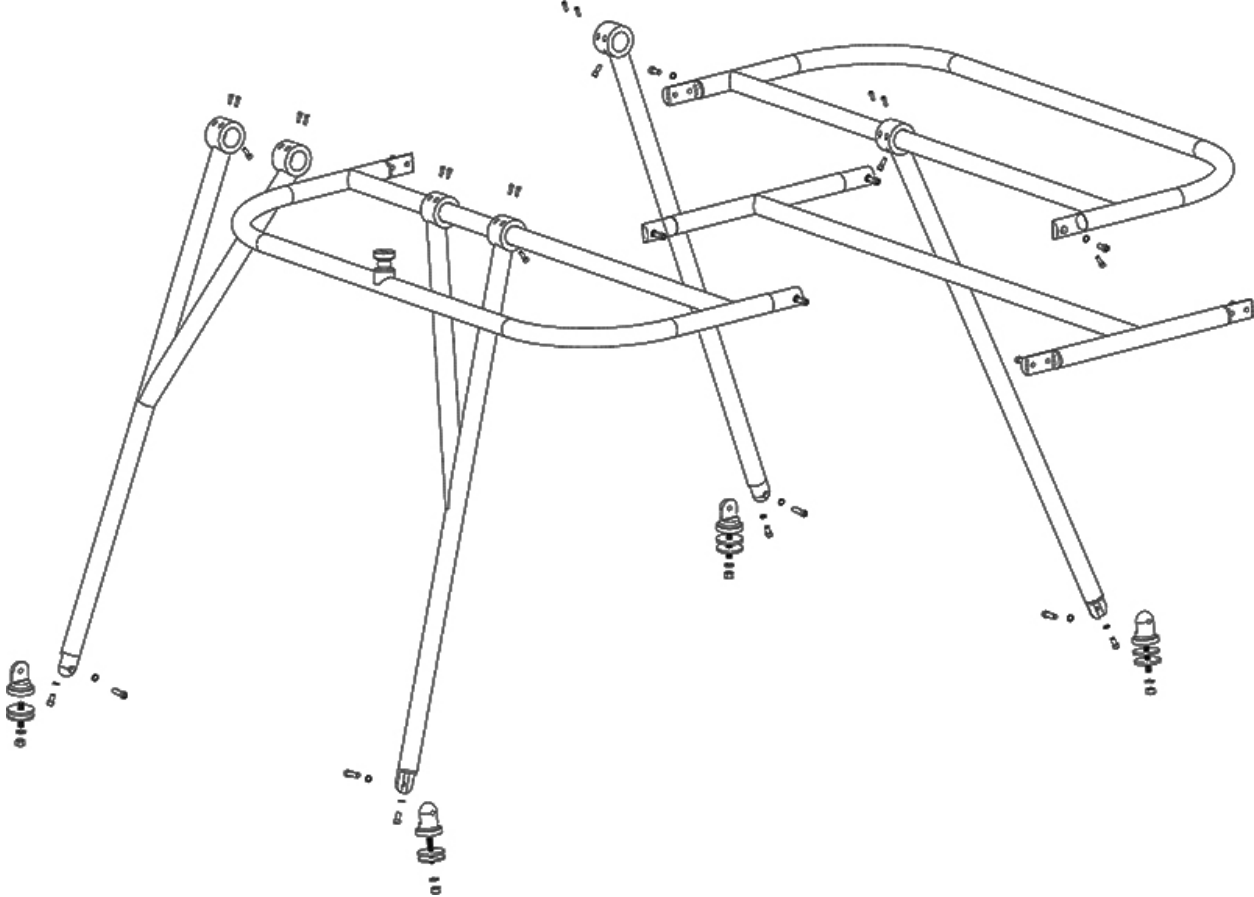
- Canopy Size: 83" long x 70" wide
- Adjustable height up to 63" tall based on mounting location
- Adjustable width up to 76" between mounts
- Adjustable mounting distance of 60"-90" between front and rear mounts

For more reference photos, please visit

[https://www.makeawakemarine.com/store/p102/Walk Around T-Top.html](https://www.makeawakemarine.com/store/p102/Walk%20Around%20T-Top.html)



**EXPLODED VIEW OF THE WALK AROUND T TOP FOR REFERENCE**



**Rear Side (left) to Front Side (right)**



**STEP 2:** Attach the Side Supports to the Assemble Top Section

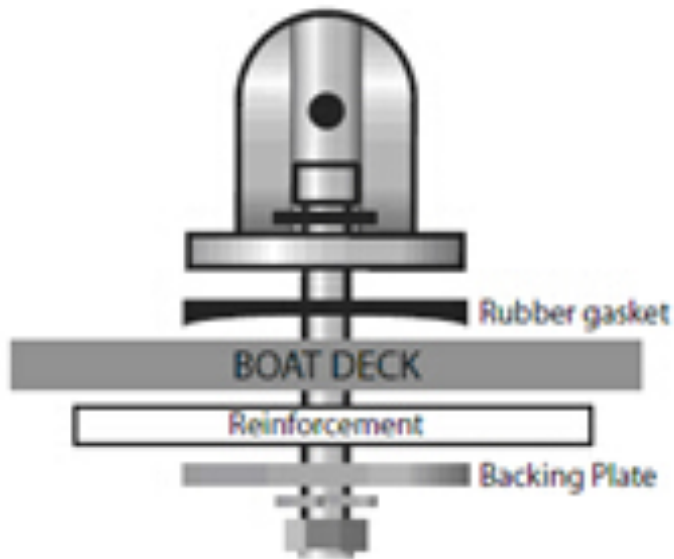
Mark where you want to mount the front legs on your boat, measure the width from the left to right, then putting 2 rubber collars on the front bow, make sure the left and right are symmetrical.

Mark where you want to mount the rear legs on your boat, note the distance between the front and rear mount is adjustable, the closer the higher, you can get up to 63in height from the mounting level when all 4 legs keep vertical. After finding the best position of the rear mounts, measure the width from the left to right, then putting 4 rubber collars on the rear bow, make sure the left and right are symmetrical. Connect the legs to the top frame but **DO NOT** tighten clamps at this stage. Leave the clamps loose for adjustability.



**Tip:** We find it is easier to find the location of the rear legs first. The rear location often determines the overall height of the canopy, so make sure it is not too low or too high. If you plan to install an electronics box under the T-Top frame, be sure to account for this when determining your height.

**STEP 3:** Attach the T top to the floor of the boat



Place the T Top you have assemble on the marks you have made on your boat. Now you can predrill and use the bolts and backing plates and lock in you mounting points. You may find that you have multiple sets of rubber gaskets, some flat, and some curved. If mounting on a curved surface, position the curved rubber gasket at the correct angle to allow the deck mount to sit flush. If mounting on a flat surface, use the flat rubber gasket.



Every boat will have various thickness of fiberglass. We recommend to all customers to provide additional bracing behind the fiberglass. We usually recommend using 1/2" or 3/4" PT plywood to make a small reinforcement plate behind the fiberglass. This will strengthen up the fiberglass and make for a stronger T-top installation.

**NOTE:** Check under the floor for any wires or objects before drilling holes.



**Tip:** To give your t top the best strength, please drill through the clamp to the tube using the guide hole on the clamp, and screw the bolt inside the hole, this will stop any shaking during driving the boat, even playing wakeboarding.

**STEP 4:** Attaching the cover to the top frame.





The canvas is specifically made to fit your t-top upper frame. Place the canvas on-top of the frame and wrap flaps over and around the frame. Zip or velcro the canopy on all sides to secure it to the frame of the T-Top.

**Tip:** Always be sure to remove the canopy while trailering the boat. This will extend the life of your canopy and reduce the chance for any tears in the fabric caused by high winds.





**Step 5:** Tighten all bolts and finish installation.



### **CARE AND MAINTENANCE**

Be sure to check and tighten all fasteners and connections prior to every use. Be cautious when towing or driving under obstacles, low hanging structures or trees. Leave dolphin top in the erect position when towing behind a vehicle. Use soap and water to clean your tower. Avoid abrasive

material that might scratch or damage the tower protective finish. Always rinse and wipe down tower after contact with salt (brackish) water.

### **WARRANTY**

Dolphin T Tops warrants the product (not including other 3rd party accessories) against manufactures defects. To claim you must contact Dolphin T Tops or his Distributor. The product/part is to be sent to the Distributor for inspection where it will either be repaired or replaced. (unless otherwise agreed in writing) The customer is liable for costs associated in shipping the product/part to Dolphin T Tops.

Dolphin is not responsible for personal injury or damage to the boat caused by the use of the t top or any transport charges or cost of installation or removal of the t top. Dolphin is not liability for direct or indirect or consequential damages resulting from delay or improper installation.

**CANOPY IS RATED FOR UP TO 45 MPH. Please remove canopy when driving above rated speed.**

Warranty does not cover Anodized, polished or powder coated surfaces as well as any hardware corrosion they are specially excluded as their care and use cannot be controlled by Dolphin.

Warranty does not cover the spider coat gel cracking or damage from the installation or use of the t top on your boat. No dealer, retailer or manufacturer is the agent and may not assume any liability in connection with this warranty. This warranty is in lieu of all.

### **WARNING**

The construction of your boat, design, thickness of flooring deck and walls and overall design may cause movement at the mounting points. If the construction of you boat causes movement at the mounting points or incorrect mounting location creates added pressure on joints increasing movement of the t top it voids warranty. If in doubt do not install the t top Check all bolts and parts prior to use, especially after towing behind a vehicle, lowering and raising after storage.

Do not stand, climb or jump o# tower, do not tow the boat behind a vehicle with the t top lowered. Do Not Ski, wake, tow tubes, boats and other watercraft from the tower. Watch out whilst moving under objects, such as bridges, low building and trees.